


# The Soul of a Community



A community needs a soul  
if it is to become a true  
home for human beings.  
You.. the people must give  
it this soul.

Pope John Paul II

[PICTUREQUOTES.COM](http://PICTUREQUOTES.COM)



PICTUREQUOTES

# What is the soul?



## What We Are.

Our soul is who we are as people: a combination of the activity of our mind, will, and emotion.



# What is the soul?

**The soul is the whole consciousness!**

- The Mind- What you think, your intellect
- The Will- Making responsible choices and decisions
- The Emotions- mental health stability, emotional support

# What is the soul of the community?

- What attaches people to the place where they live?
- A 2010 Gallop study surveyed 40,000 to ask what drives community involvement.
- Drivers included social offerings, aesthetics and openness.



# How has the pandemic affected the soul of the community?

- The mind, will and emotions of the community has changed drastically.
- Vulnerable and underserved populations have become more endangered.
- Misinformation from media, social media and other outlets.

# The effects of COVID-19

COVID-19 



Early lockdown studies found that



**up to 37%** showed signs of psychological distress and



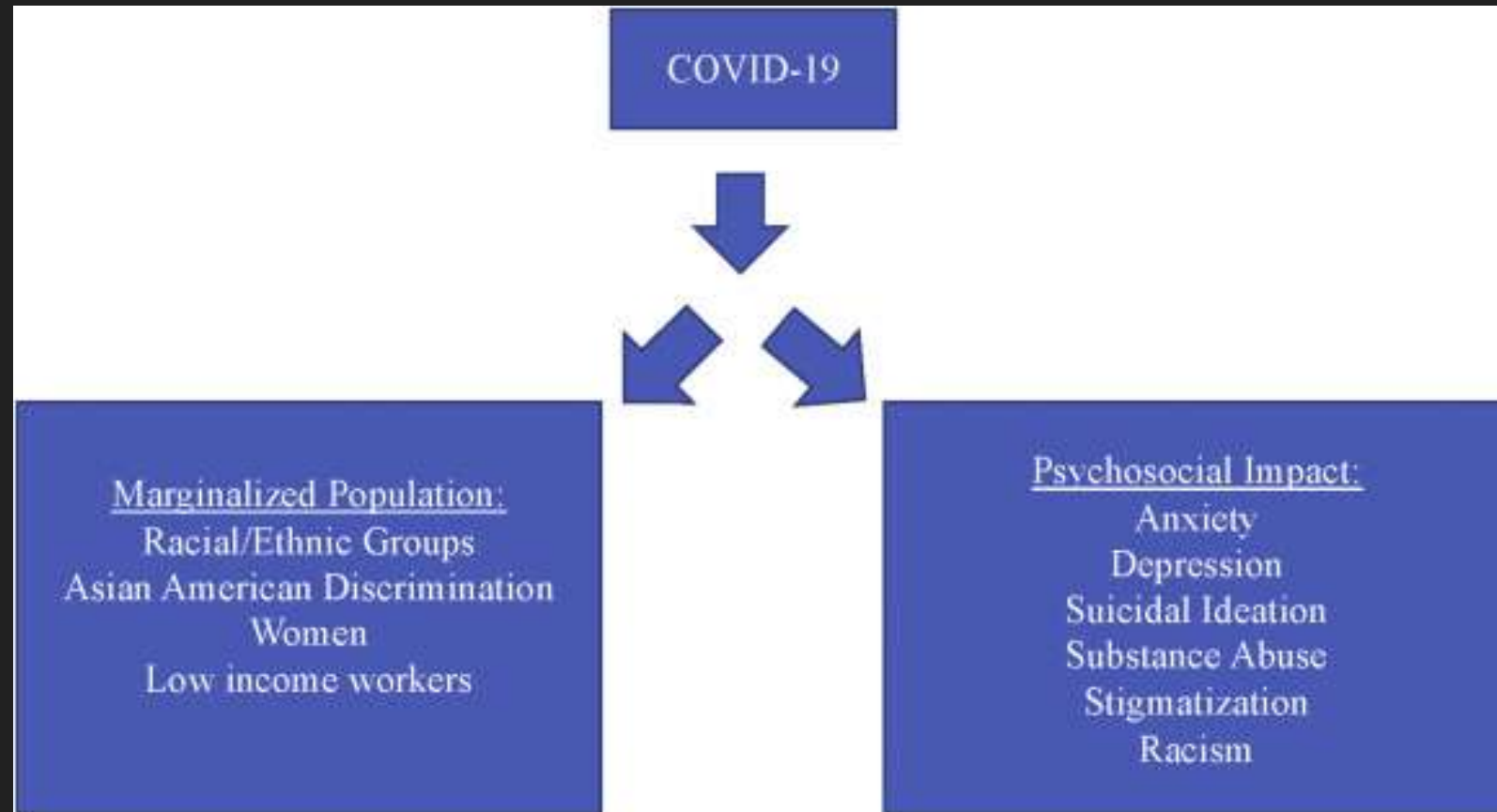
**up to 45%** of adults felt adverse effects on mental health,



**up to 70%** felt this period was the most stressful of their careers.

Source: COVID-19 Risks Outlook 2020: A Preliminary Mapping and its Implications

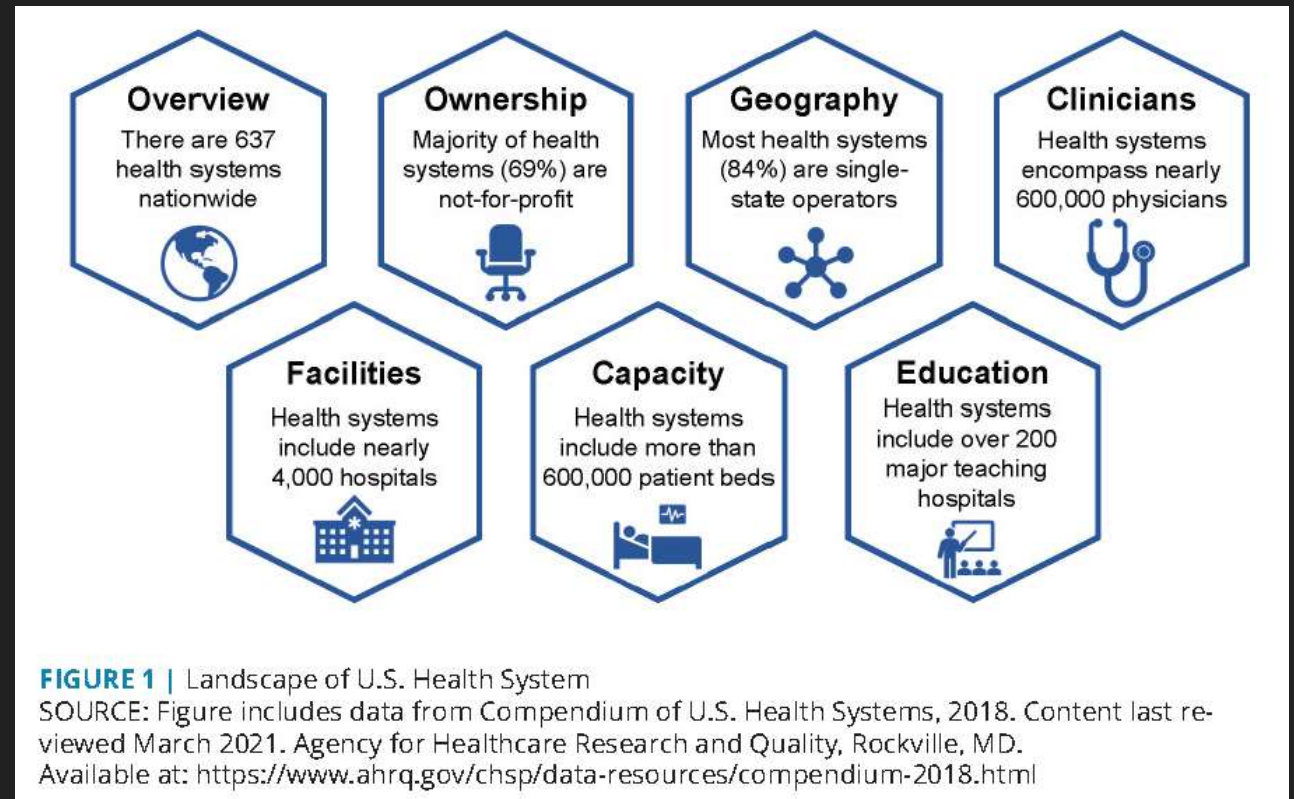
# The Effects of COVID-19





# Effects of COVID on the healthcare system

- Economics on the healthcare system
- Lack of staff
- Psychological/Burnout





# Health System Challenges

**TABLE 1 | Health System Challenges During COVID-19**

Theme	Challenges	Example
<i>Financial Impact</i>	<ul style="list-style-type: none"> <li>Care delays and cancellations disrupted revenue streams and severely affected provider finances</li> <li>Providers incurred many pandemic-related costs (and paid premiums) to purchase supplies and restructure clinical workflows</li> </ul>	<ul style="list-style-type: none"> <li>Financial losses for hospitals between March 2020 and June 2020 are estimated to exceed \$200 billion</li> <li>The cost of refilling essential medicines increased by 62% during April 2020</li> </ul>
<i>Supply Chain</i>	<ul style="list-style-type: none"> <li>Health systems across the country reported persistent shortages of PPE, essential medicines, and medical devices</li> <li>Outsourced manufacturing and depleted domestic reserves contributed to supply chain vulnerabilities</li> </ul>	<ul style="list-style-type: none"> <li>Hospital demand for dexamethasone increased by 610% while fill rates declined to 54%</li> <li>Over 20% of nursing homes nationwide reported severe PPE shortages well into the summer of 2020</li> </ul>
<i>Workforce</i>	<ul style="list-style-type: none"> <li>Pre-pandemic staffing shortages were an obstacle to the development of surge capacity for COVID-19</li> <li>COVID-19 has exacerbated the existing challenges of burnout among health professionals</li> </ul>	<ul style="list-style-type: none"> <li>Staff shortages for critical care led to increased demand among health systems for temporary clinicians</li> <li>Surveys of providers indicated elevated levels of stress and symptoms of anxiety, depression, and post-traumatic stress</li> </ul>
<i>System and Community-Wide Coordination</i>	<ul style="list-style-type: none"> <li>Coordination within health systems and with other sectors was complicated by decentralized governance models</li> <li>Outdated technical infrastructure created challenges for data sharing</li> </ul>	<ul style="list-style-type: none"> <li>Health department capacity varied widely across the country, requiring health systems in rural and underserved areas to take on additional responsibilities</li> <li>Funding for the Hospital Preparedness Program was reduced by 46% between 2003 and 2020, limiting the resources available to hospitals to coordinate emergency response</li> </ul>

# Community & the Health Care System

- Addressing lack of trust in the healthcare system
- Addressing “upstream” social determinants of health
- Fostering health-promoting resources and reducing health-damaging risk factors throughout the life course.
- Improving access to, effects of, and the value of clinical health care services.

# How do we deepen the connection?

- “When one of us suffers, we all suffer.”
- Compassion & empathy for our fellow neighbor
- Communication is key!!!!
- Understanding, communicating and addressing the trauma of specific communities that can deepen the connection between the community and health care systems.
- Having a sense of attachment to the community who you serve.

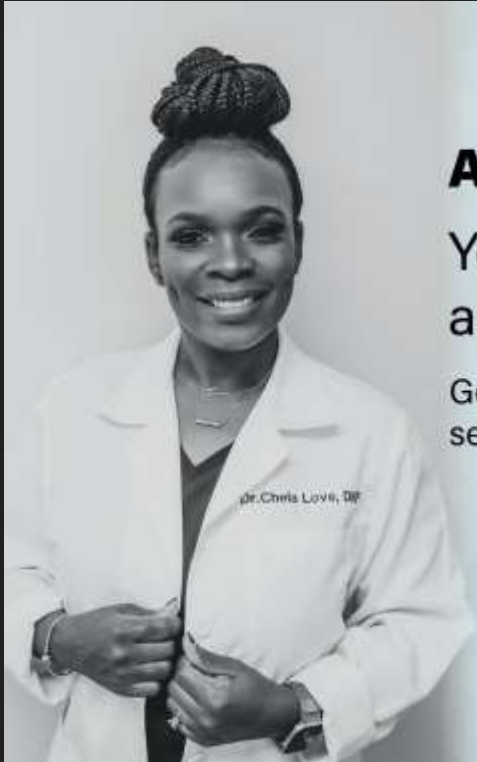




# What is Direct Patient Care?


- Nomad Medical is Wichita's newest Direct Care practice. We offer a pattern of family healthcare that is immediate, thorough, comprehensive, specific, easily affordable, and very, very personal.
- Direct Primary Care clinics don't accept insurance, rather they choose to work directly *with* the patient, providing wholesale labs, deeply discounted prescription prices, and other cost savings along the way.
- No deductibles, no co pay, same day appointments & TIME, TIME, TIME with your provider for understanding, education and relationship building.

# Thank You For Listening!



**At Nomad Medical, LLC,**  
You're a **priority**  
and you'll feel like one.

Get to know Dr. Love, DNP, and staff and see the benefits of direct care done right.



**Now accepting patients!**  
**[nomadmedllc.com](http://nomadmedllc.com)**

# Question & Answers







Dr. Chela Love, DNP

[ChelaLove@nomadmedllc.com](mailto:ChelaLove@nomadmedllc.com)

316-669-4770

[www.nomadmedllc.com](http://www.nomadmedllc.com)